

## MATERIALI E FINITURE / MATERIALS AND FINISHES



**L.01** Laccato bianco  
White lacquered



**L.11** - Tinta faggio naturale  
Natural beech colour



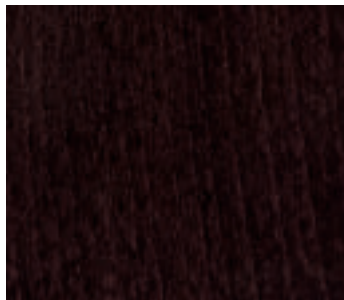
**L.61** - Tinta rovere naturale  
Natural oak colour



**L.21** - Tinta ciliegio  
Cherry color



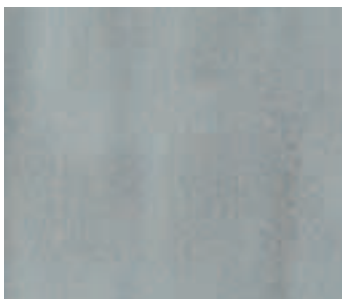
**L.41** - Tinta noce scuro  
Dark nut-brown colour



**L.51** - Tinta rovere wengè  
Oak wengè colour



**L.31** - Tinta metallizzato alluminio  
Metalized aluminium colour



**M.65** - Tinta alluminio spazzolato  
Colour brushed aluminium colour



**M.05** - Tinta nichel  
Colour nickel



**M.55** - Acciaio inox spazzolato  
Brushed inox steel



**M.45** - Cromato lucido  
Polished chromed



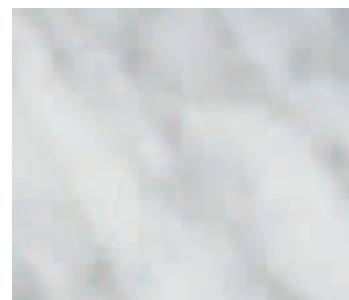
**M.25** - Verniciato grigio  
Painted gray



**M.35** - Verniciato grigio alluminio  
Painted aluminium gray



**M.15** - Acciaio naturale lucidato  
Polished natural steel



**C.101** - Marmo Carrara Bianco  
Carrara White marble

**L** = Legno / Wood  
**M** = Metallo / Metal  
**C** = Marmo / Marble

The colour tones in the colour-chart are only indicative.